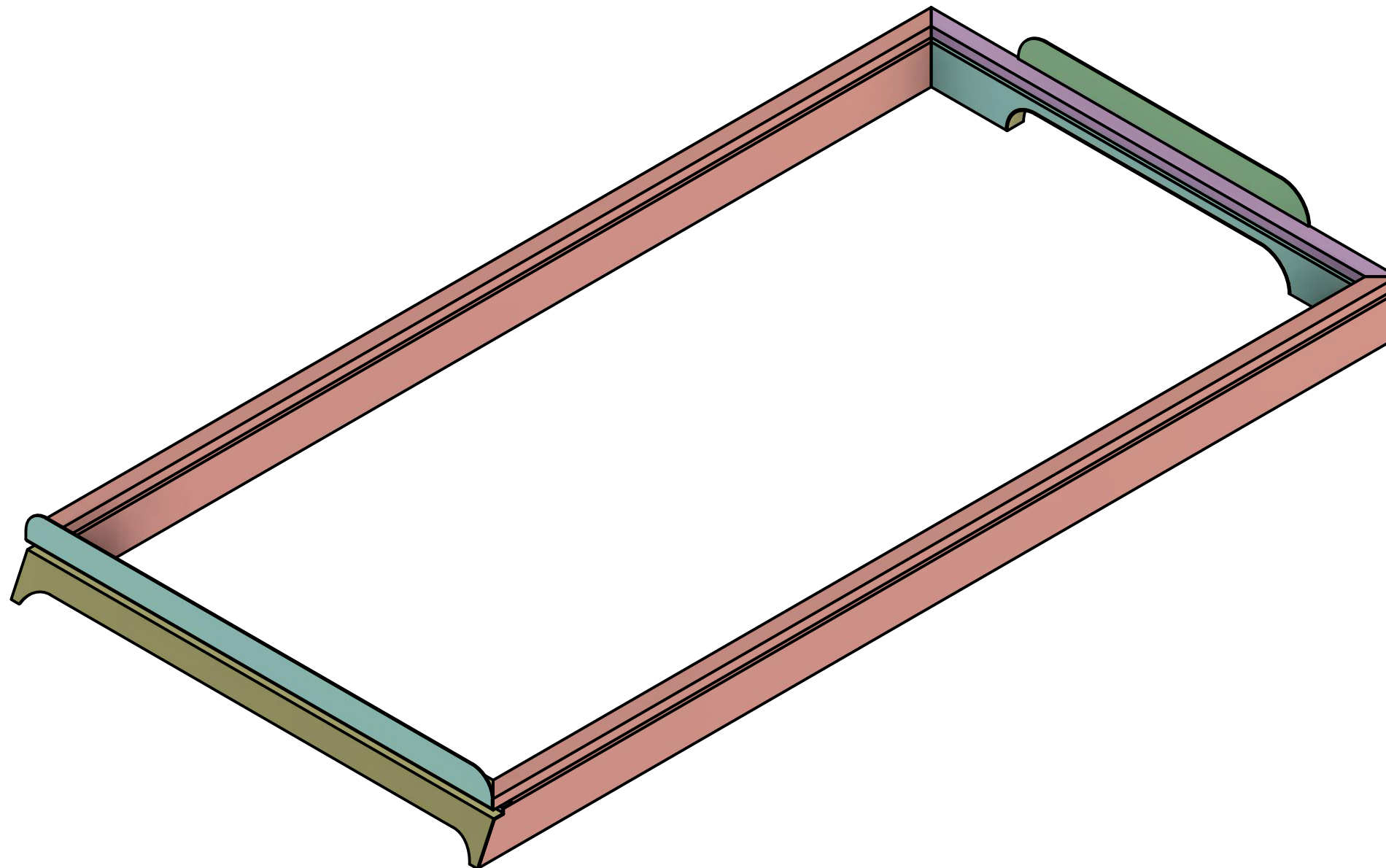


# PopTop\*

## Land Rover Defender



### \*Disclaimer

Please note that these drawings and information are only a suggestion on how to build this design and may not contain the full details required for building this design.

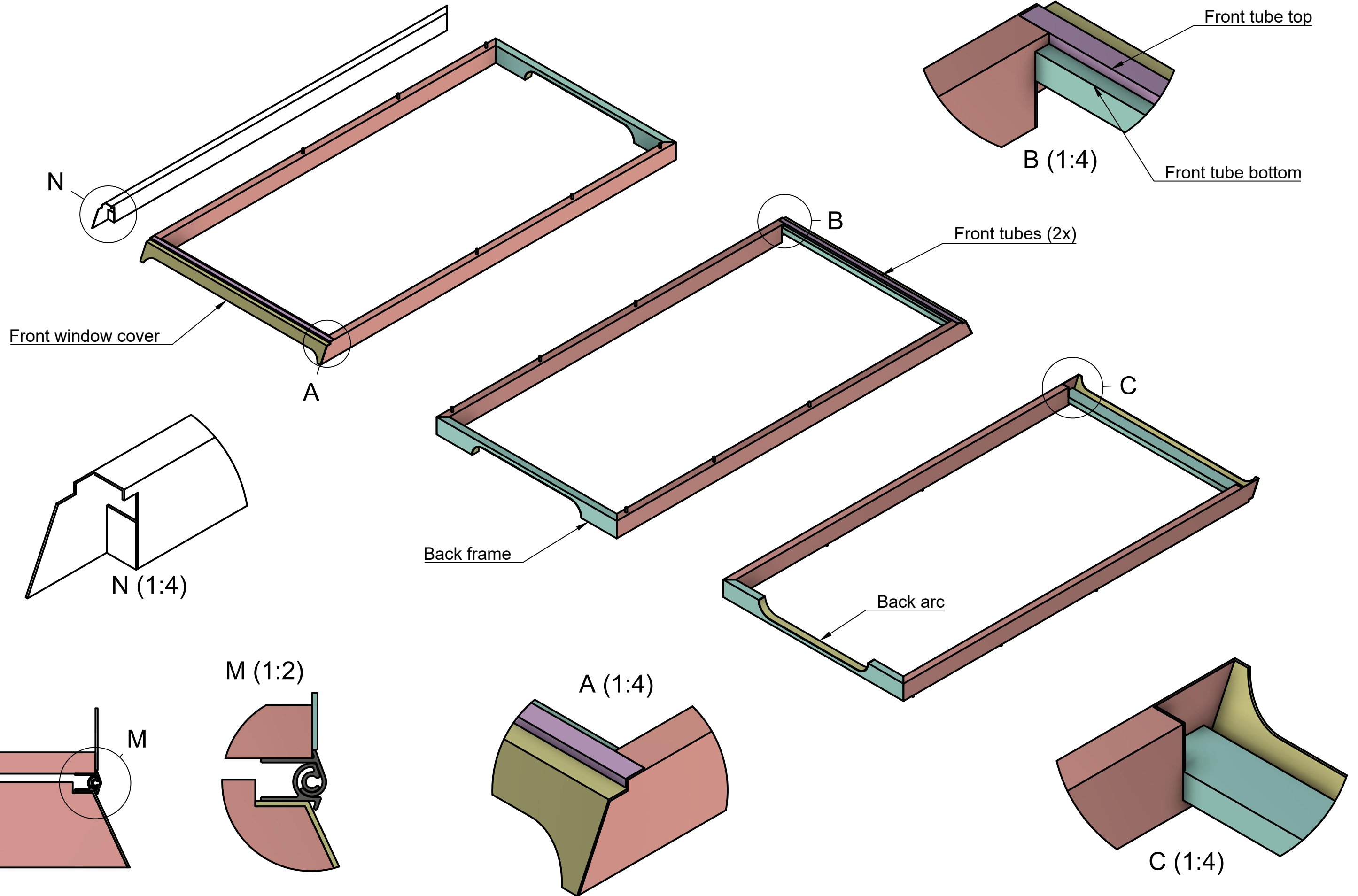
Gaias-trek cannot be held liable for the compliance of this design to applicable regulations and it remains the responsibility of the user to ensure all regulations are met.

Gaias-trek accepts no responsibility or liability for any loss or damage caused to the user or any third party through any use of this design or related information.

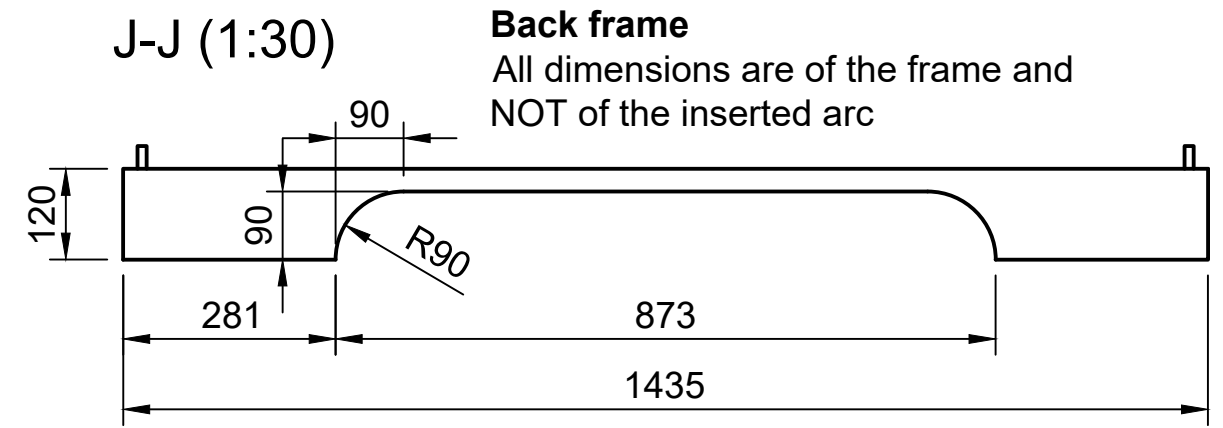
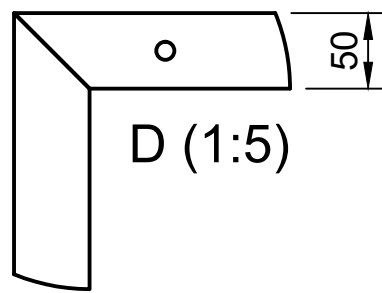
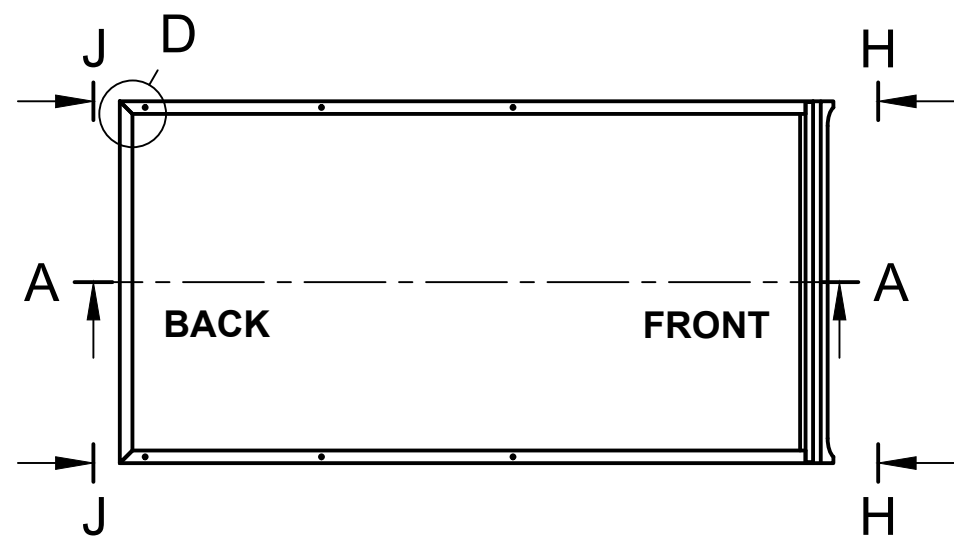


Version	V1 (July 2022)
Created by	Felix ter Hark and Niels Winkelman
Owned by	Felix ter Hark (gaias-trek.com)
License	Attribution-NonCommercial-ShareAlike (CC BY-NC-SA)
Created for model	Land Rover Defender 110 1997

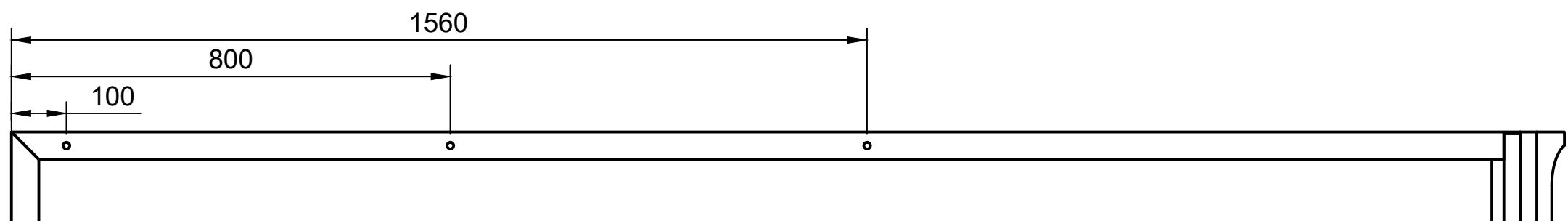
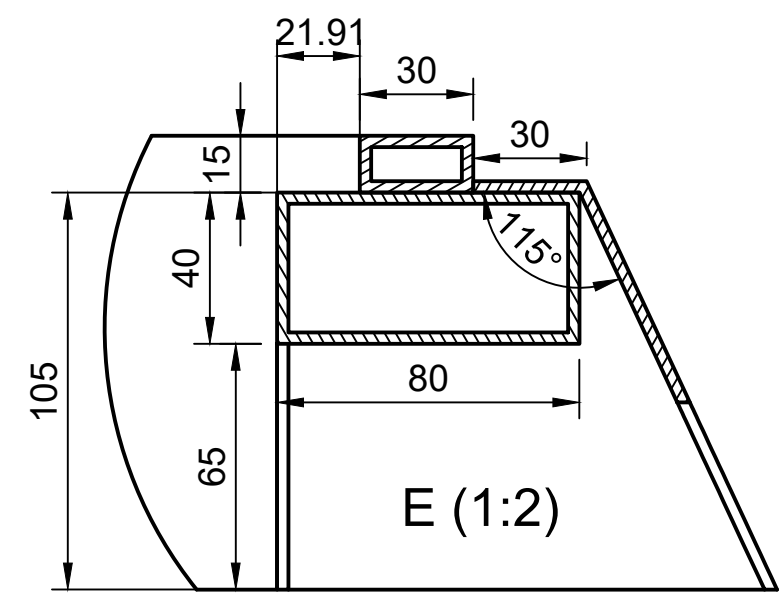
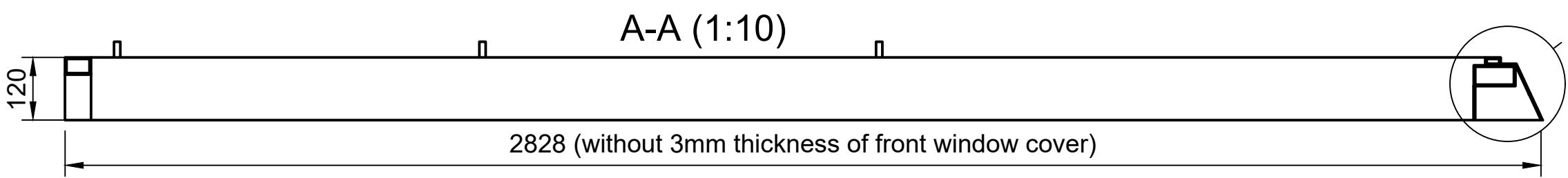
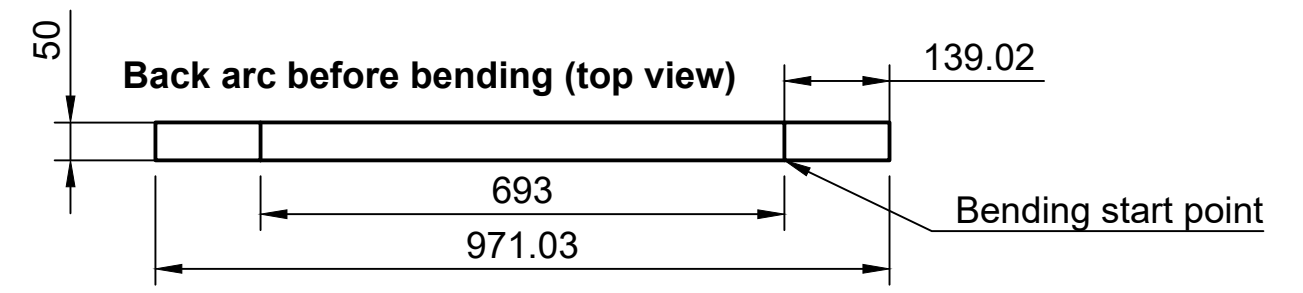
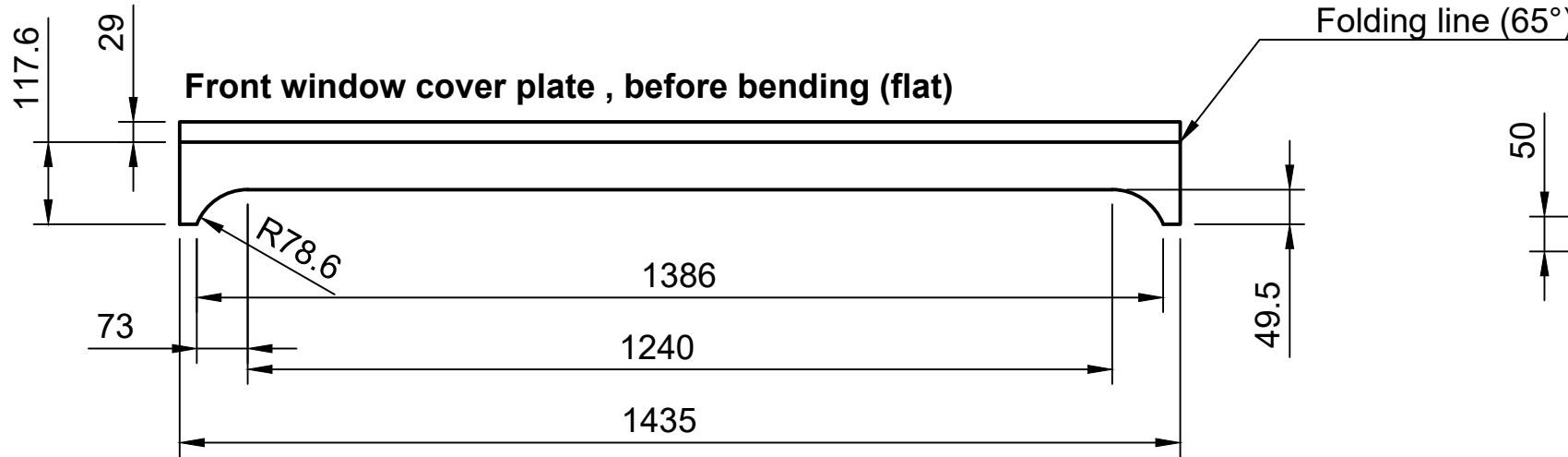
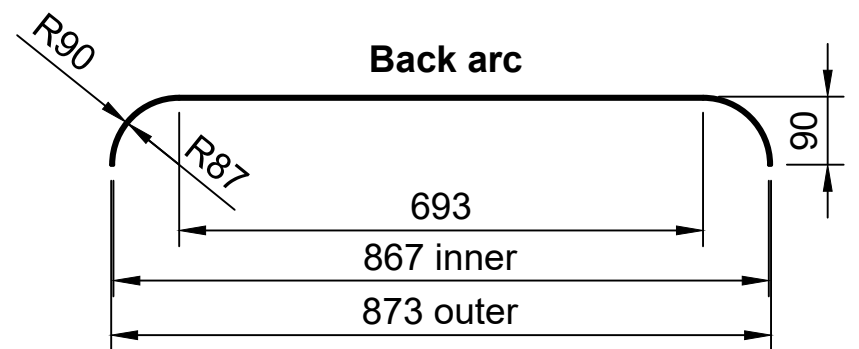
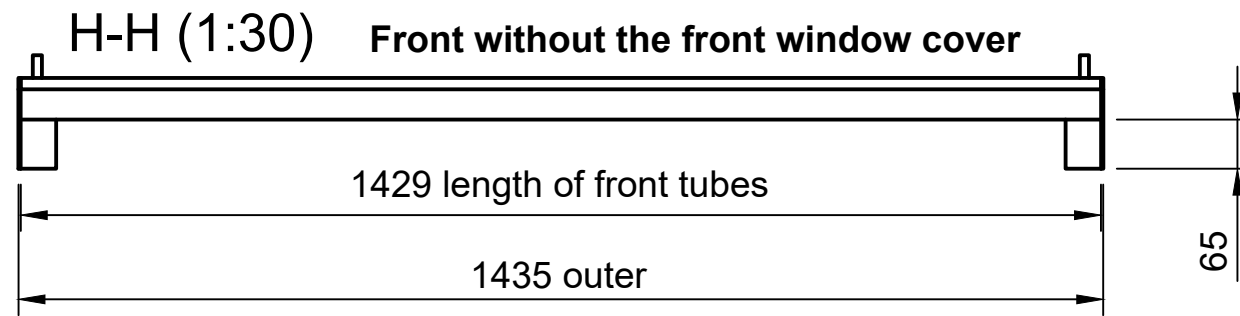
# BOTTOM FRAME



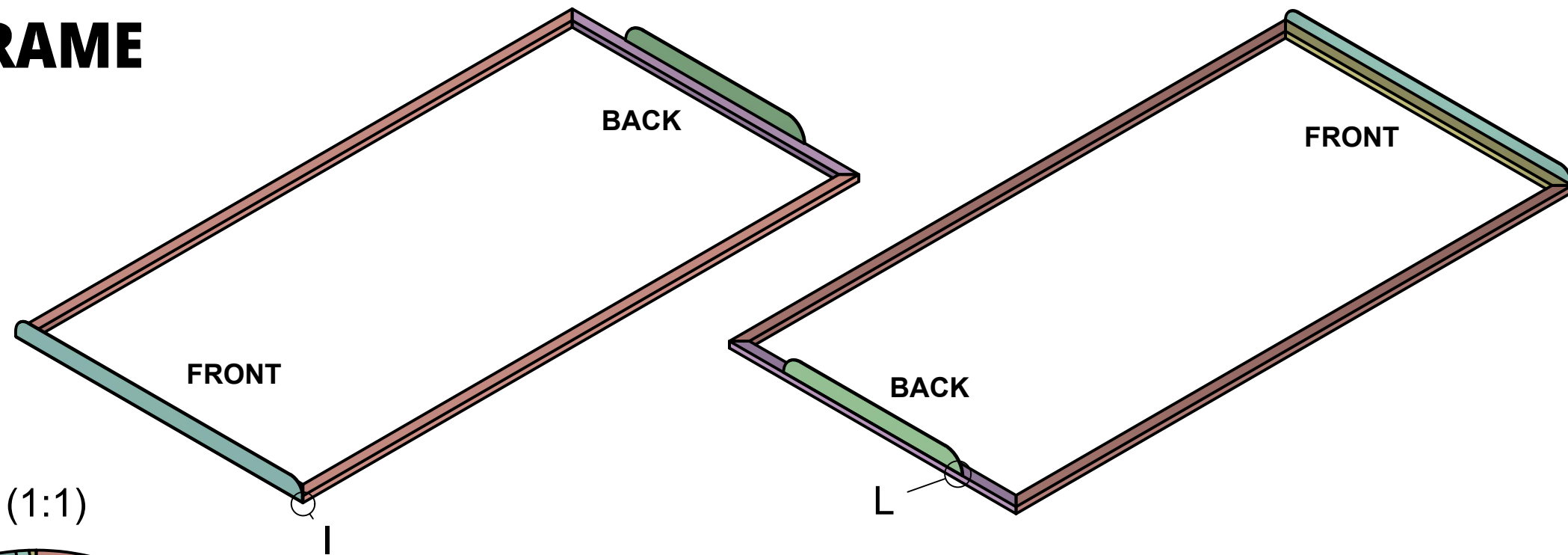
# BOTTOM FRAME



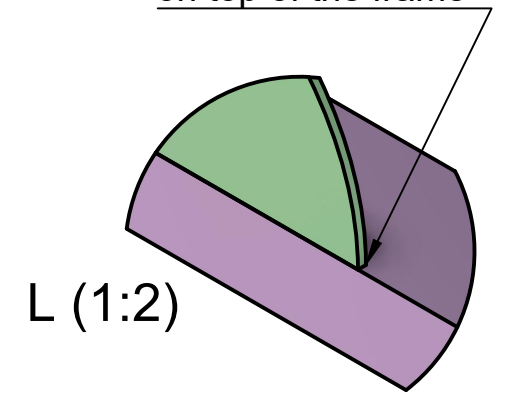
**Back frame**  
All dimensions are of the frame and NOT of the inserted arc



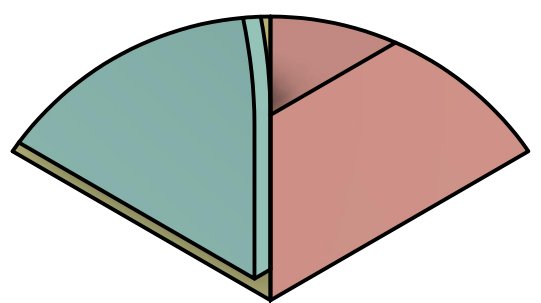
# TOP FRAME



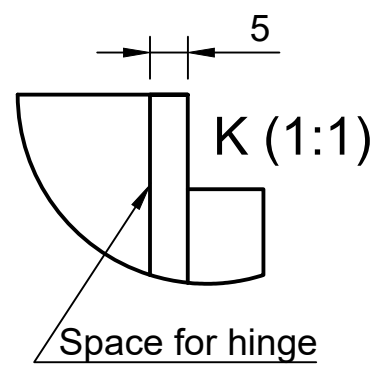
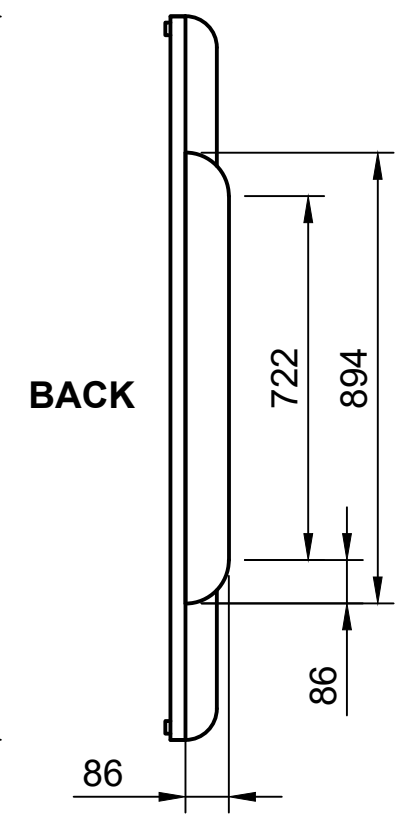
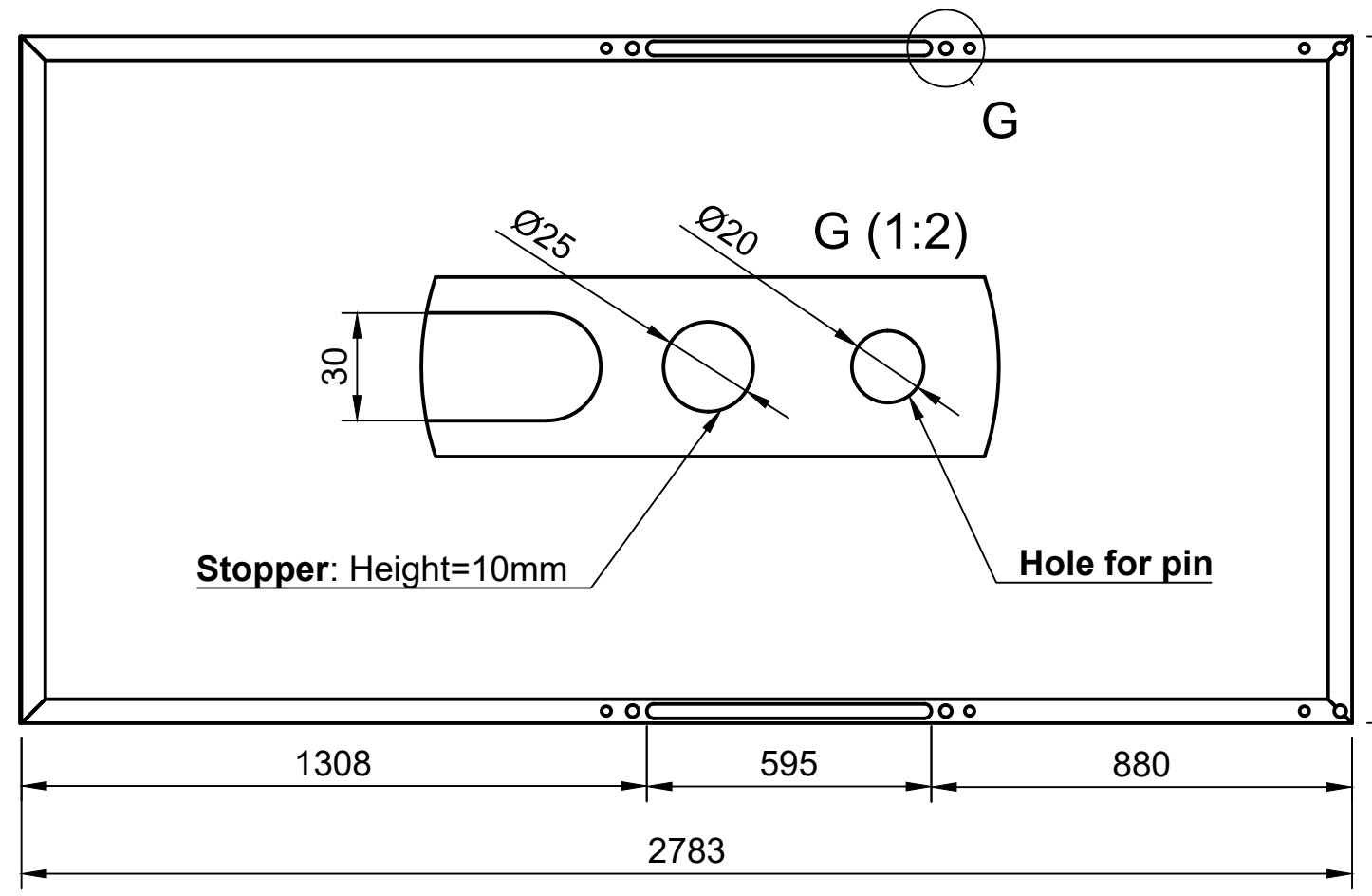
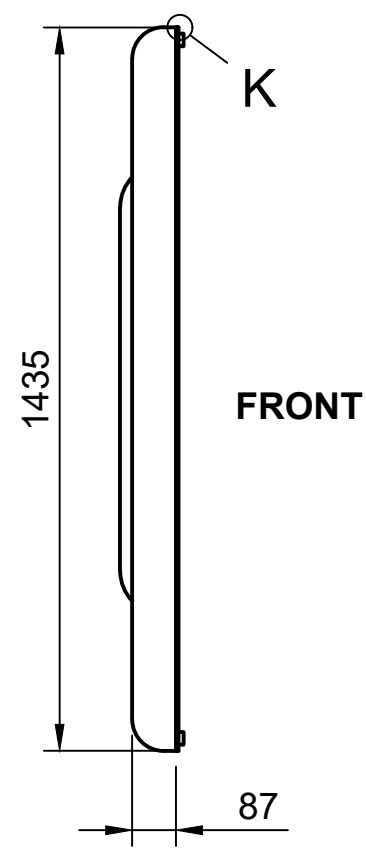
Back cover rests on top of the frame



I (1:1)



Space for hinge



Space for hinge

\*Do not use these dimensions, it is only an indication. Preferably use the actual locations of your pins.

